



The next phase underway –  
**we need your help protecting these headwaters.**

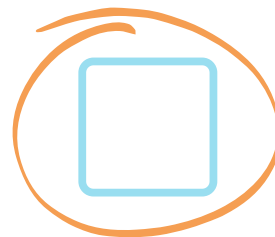
*Photo: ©Geoffrey Smith*



Initial  
138 acres  
**PROTECTED**



20 acres of  
valuable land  
**IDENTIFIED**



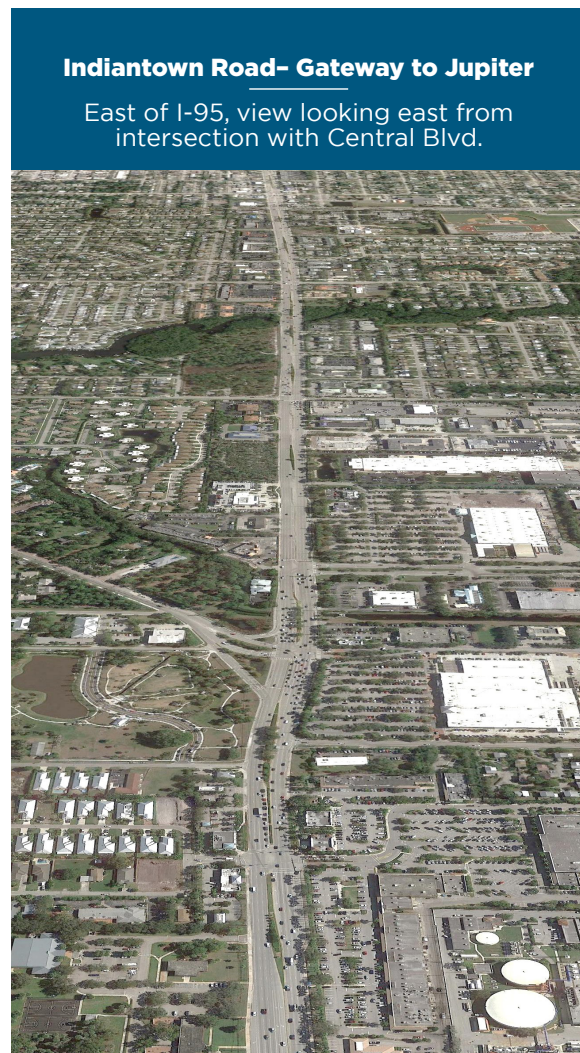
**HELP US  
SUPPORT**  
this acquisition



For decades, the State of Florida and its residents in northern Palm Beach County and southern Martin County have been working to protect a mosaic of wetland marshes and low-elevation pinelands that are critical to maintaining healthy watersheds of the Loxahatchee River and South Fork of the St. Lucie River.

## WHY IT'S IMPORTANT

Over-development threatens this fragile ecosystem.



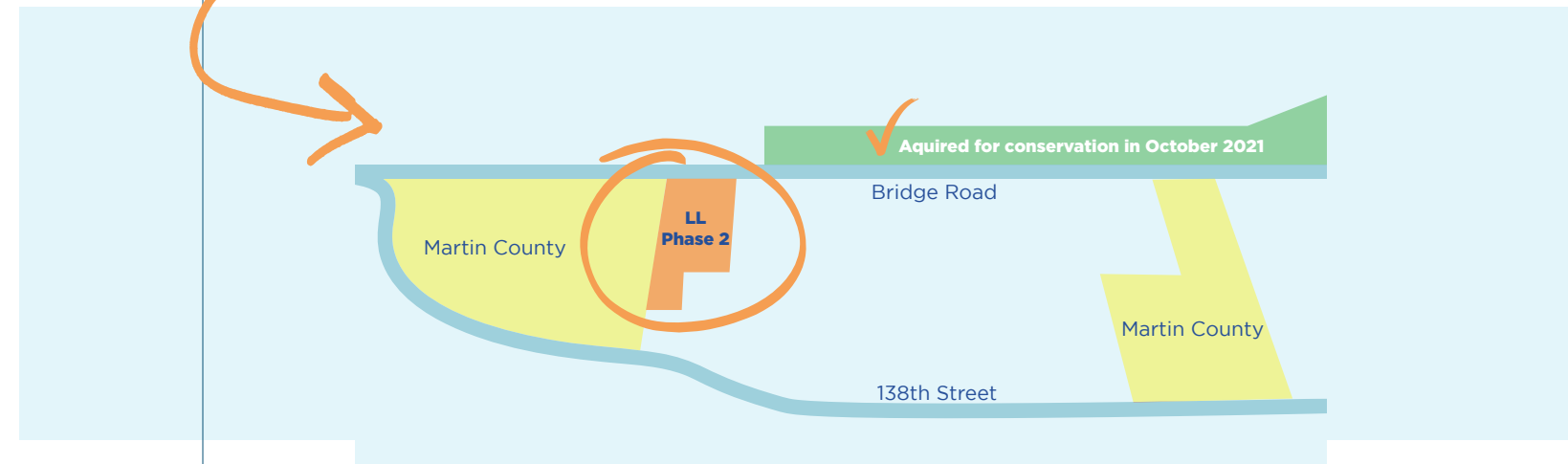
Date of photo: January 13, 2019 Source: Google Earth



Date of photo: January 13, 2019 Source: Google Earth

## LL PHASE 2

The next step in headwater lands protection.



Help support our efforts to protect the Bridge Road corridor and the headwaters of the Loxahatchee and St. Lucie Rivers! We are currently working with a willing seller to acquire the **Phase 2 property** in the map above. This property will help protect another property on Bridge Road, help restore wetlands, and act as a natural hydrological connection to the Loxahatchee River. It will also help connect a corridor for the wildlife that depend on these connected ecosystems of the Atlantic Ridge Preserve State Park and Jonathan Dickinson State Park.

## TOGETHER, WE CAN...



...prevent urban sprawl



...Provide a vital corridor for wildlife



...restore degraded wetlands



...manage the demand for freshwater



...enhance aquifer recharge & improve water flow to the Loxahatchee and St. Lucie Rivers



**The Loxa-Lucie headwaters are home to bobcats, wood storks and other wading birds, endangered plants, carnivorous plants, and many others.**



**This Project has been endorsed by:**

- Audubon of Martin County
- The Friends of Jonathan Dickinson
- The Hobe Sound Golf Club
- The Indian River Lagoon National Estuary Program
- The Town of Jupiter Island
- The Jupiter Island Historical Society
- The Jupiter Island Residents Assn.
- The Loxahatchee River Management Coordinating Council
- The Martin County Chapter of the Florida Native Plant Society
- The Martin County Commission
- Jupiter Island Garden Club
- Center for Plant Conservation

**For a list of all our current endorsements see our website.**

**Help support these crucial headwaters - donate today.**



To make your tax-deductible contribution, visit [loxalucieheadwaters.org](http://loxalucieheadwaters.org)  
 Donation by check: Please designate your gift by including Loxa-Lucie Headwaters FL #27431 on the reference line and mail to:

**Matthew S. Sexton**  
 Senior Vice President, Conservation Acquisitions  
 18 Middle Road  
 Stuart, Florida 34996

