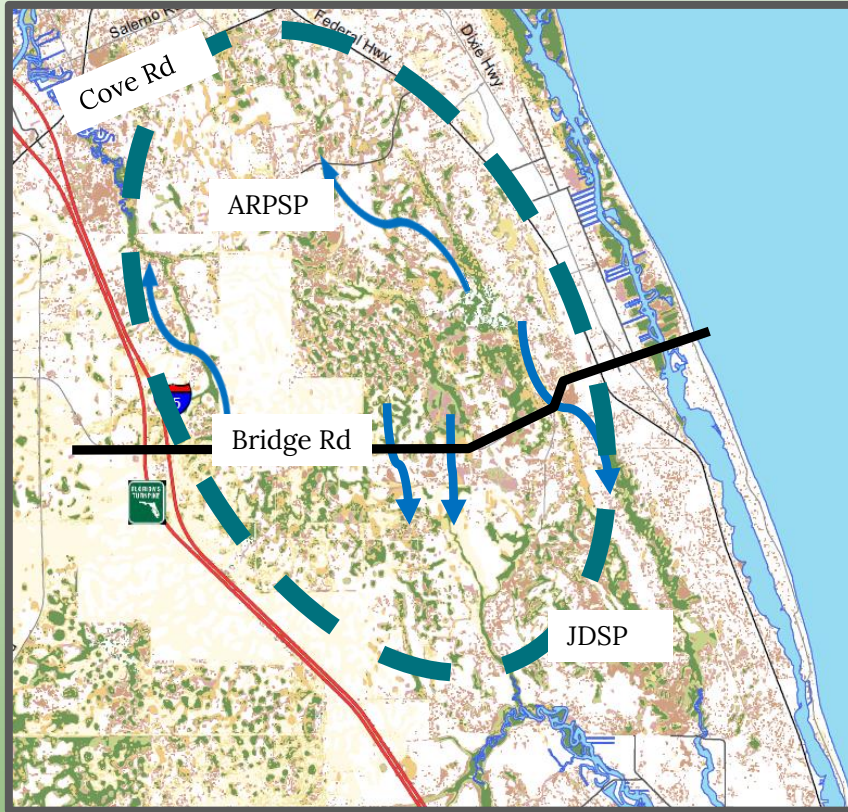


Loxa-Lucie Headwaters



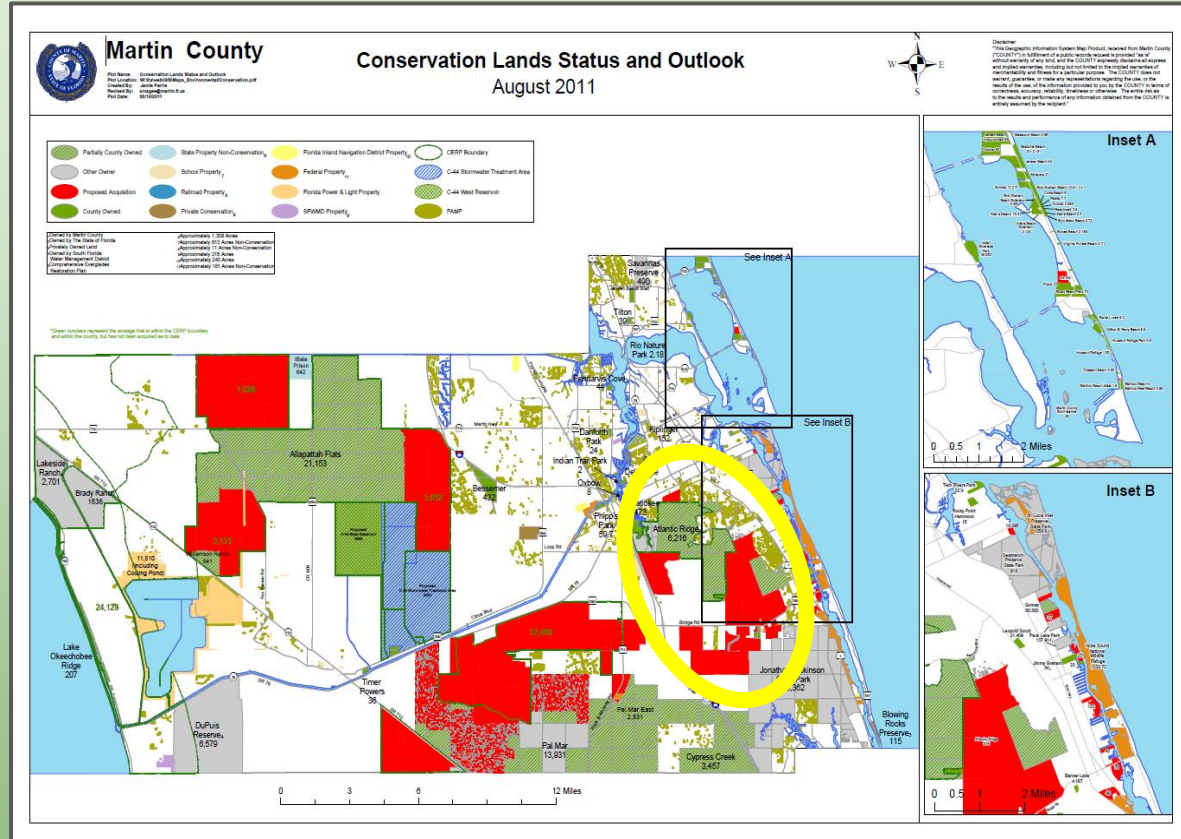
The Loxa-Lucie Headwaters Initiative envisions a protected ecological corridor that will connect the sources of the Loxahatchee & St Lucie Rivers and form a preserve for native plants and wildlife connecting a land mass of nearly 70,000 acres.

The Loxa-Lucie – Regional Context



Bridge Road is a critical feature that affects water flow into the Atlantic Ridge Preserve State Park (ARPSP) and Jonathan Dickinson State Park (JDSP).

The Loxa-Lucie – County-wide Context

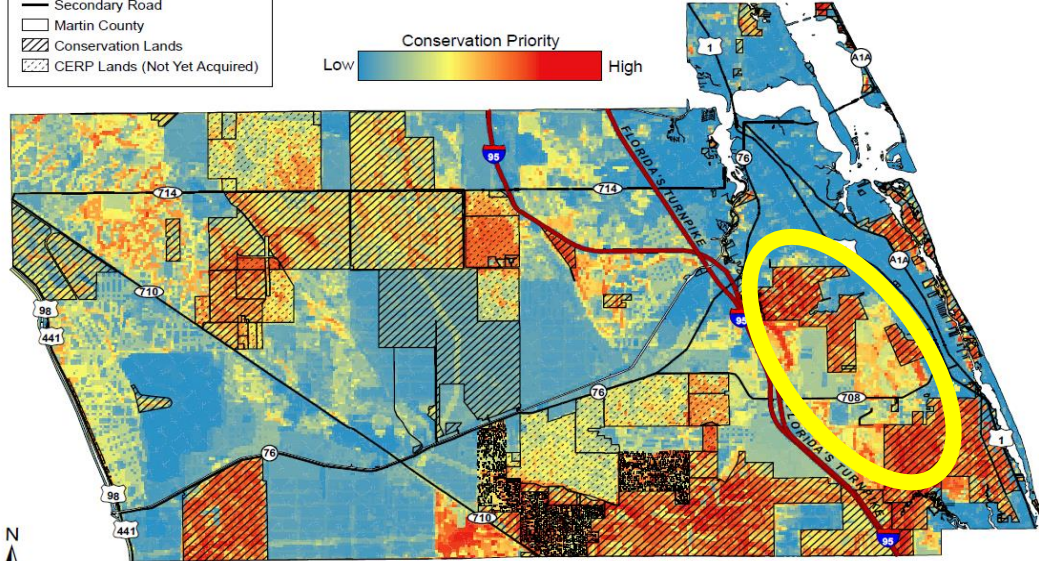
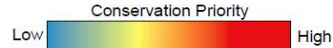


This Figure developed by Martin County shows the desirability of protecting these headwaters as part of a county-wide interconnected network of conservation lands.

The Loxa-Lucie – Ecological Context

Parameters Considered

Treasured Lands Foundation
Merged Priorities Map
Martin County

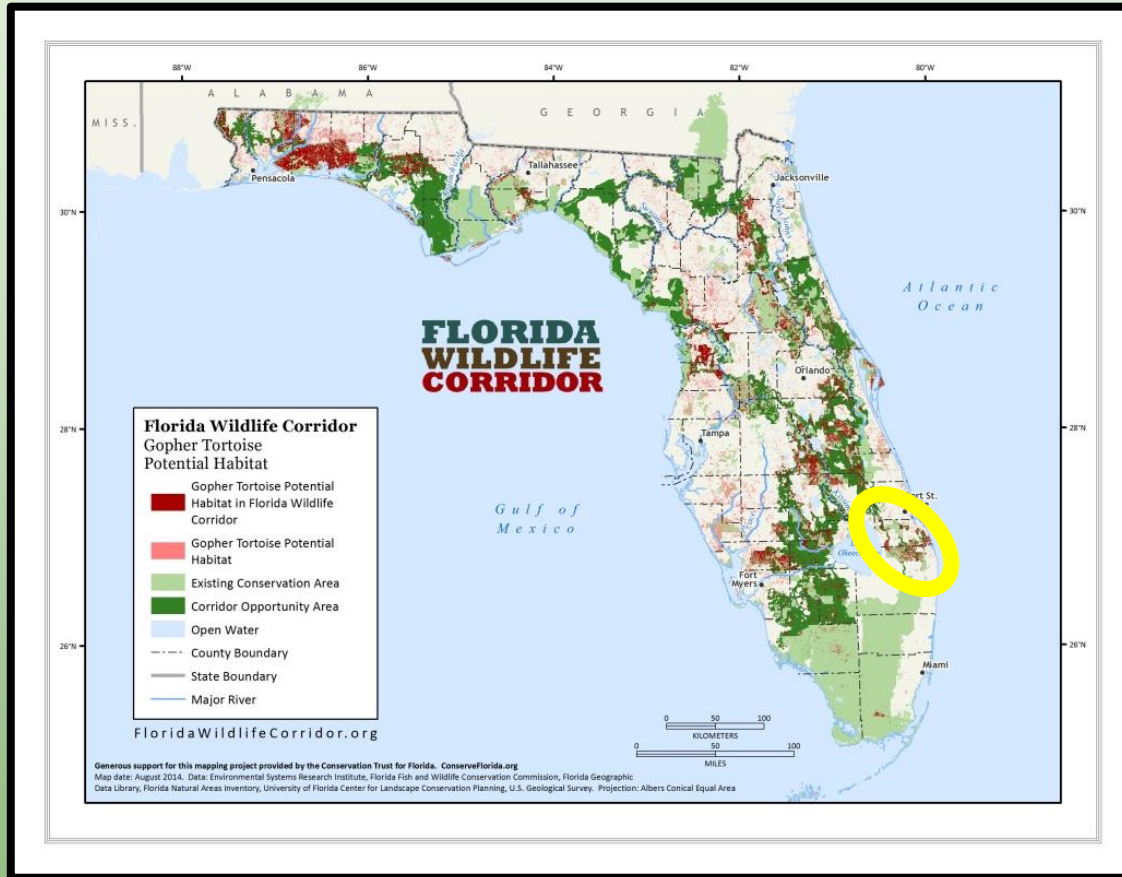


North Florida
Land Trust INC

- Rare Species Habitat
- Verified Impaired Waters
- Priority Natural Communities
- Aquifer Recharge
- CERP – Everglades Restoration
- Loxahatchee River Watershed
- Wetlands
- Freshwater Habitat Threats
- Blueways and Greenways
- Potential Habitat Richness
- Strategic Habitat Conservation Areas
- Fla Ecological Greenways Network
- Fla Forever Approved Projects
- Park Buffering
- Landscape Integrity Index
- Nationally-Registered Historic Sites
- Optimal Park Boundaries
- Scenic Byways
- Flood Risk
- Prime & Statewide Unique Soils
- Forest Soils

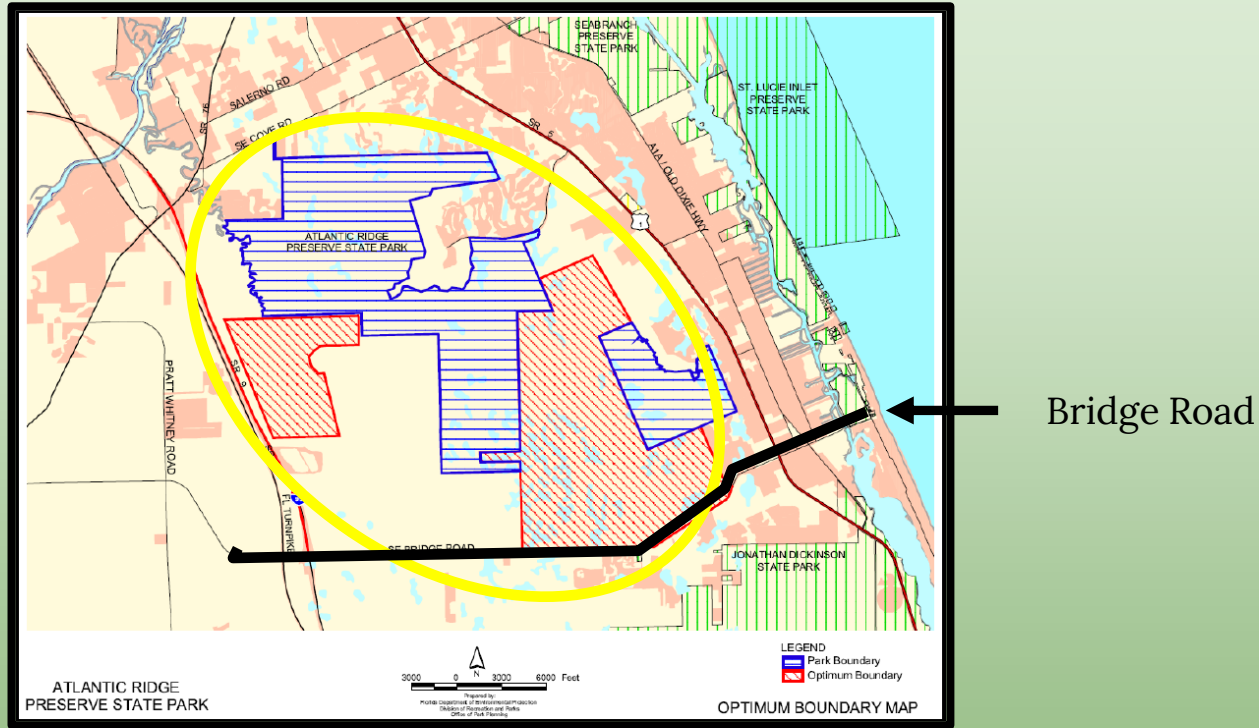
This “Environmental Priorities” Figure shows the most environmentally valuable properties in Martin County in the brightest colors, which include the Loxa-Lucie headwaters complex.

The Loxa-Lucie – Part of a designated state-wide Wildlife Corridor



This area has been identified as the only portion of the Florida Wildlife Corridor east of Lake Okeechobee.

The Loxa-Lucie – Optimal Park Boundaries

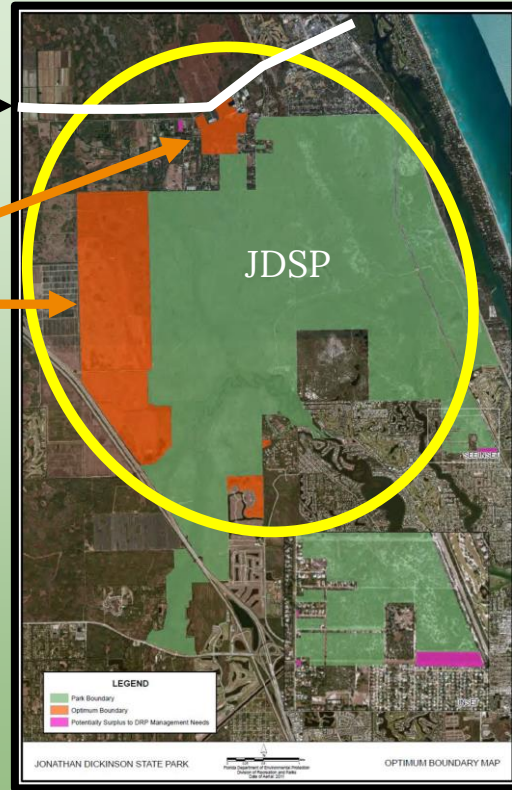


This Figure taken from the Management Plan for the Atlantic Ridge Preserve State Park (in blue cross-hatching) identifies parcels (in red cross-hatching) that the State has designated as being desirable additions to the park.

The Loxa-Lucie – Optimal Park Boundaries

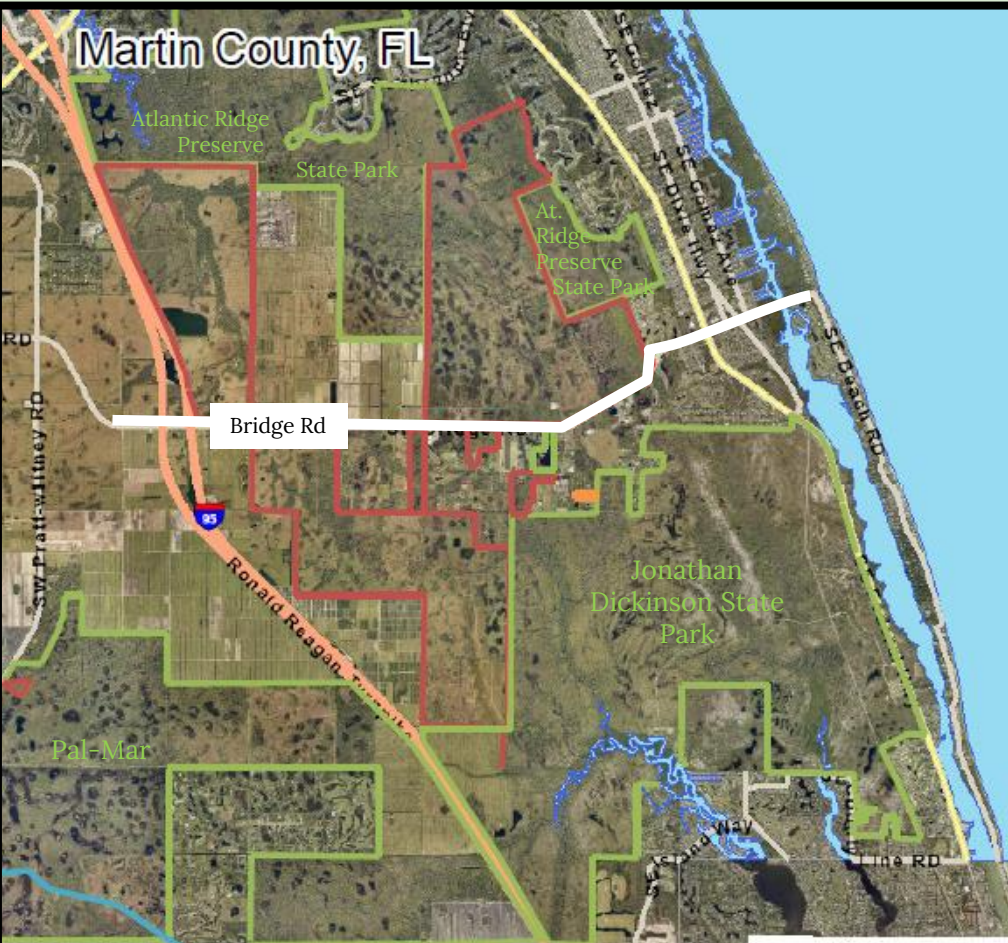
Bridge Road

Parcels that would be managed by the State if they could be brought into public ownership



This Figure taken from the Management Plan for Jonathan Dickinson State Park (in green) identifies parcels (in orange) that the State has designated as being desirable additions to the park.

Loxa-Lucie Headwaters



- Several large tracts are already in public ownership (outlined in green)
 - J. Dickinson State Park
 - Atlantic Ridge Preserve State Park
 - Halpatiokee Regional Park
- Several privately-owned tracts (outlined in red) are in substantially natural condition
- Most tracts are outside Martin County's Urban Services Boundary
- Development pressure is moderate due to zoning for residences

Here's why it is so important to preserve the Loxa-Lucie Headwaters now

Indiantown Rd
Gateway to Jupiter

East of I-95
View looking east from
intersection with
Central Blvd

Date of Photo: 1/13/19
Source: Google Earth

(It is too late to protect
natural communities
and watersheds)

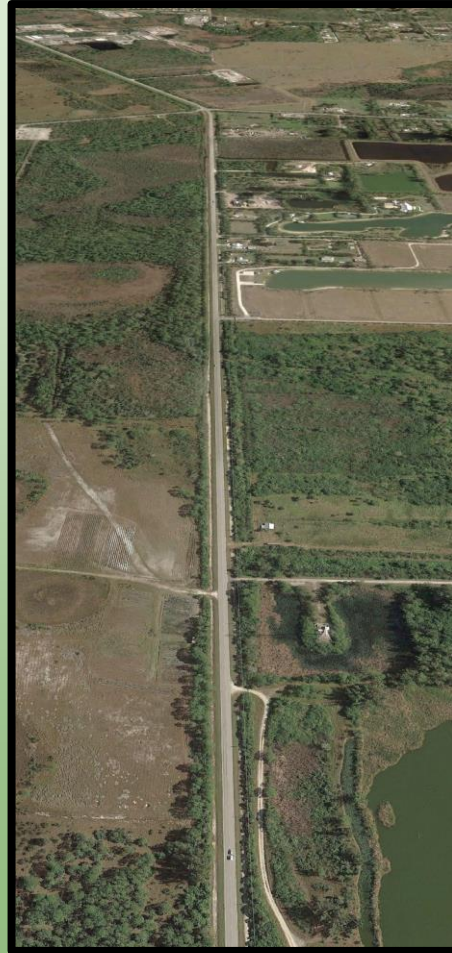


Bridge Rd
Gateway to Hobe Sound

East of I-95
View looking east

Date of Photo: 1/14/19
Source: Google Earth

(Most of the Bridge Road
corridor is in natural or
restorable condition)

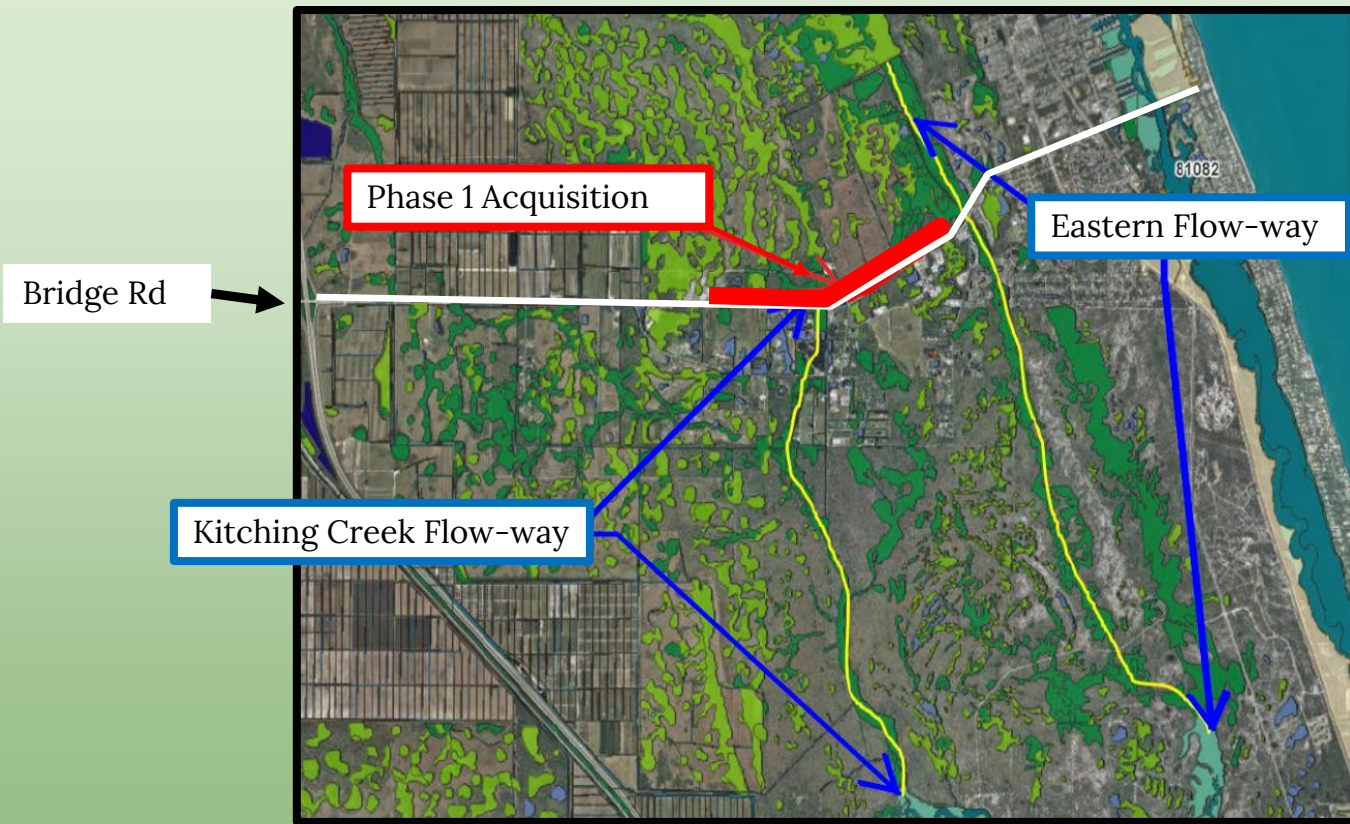


Loxa-Lucie Headwaters – Phase 1 Acquisition



To permanently restore historical water flows and protect existing natural lands in an ecological corridor for native endangered plants and wildlife

Loxa-Lucie Headwaters – Phase 1 Acquisition



- The first phase involves acquisition of nearly 1/3 (2-miles) along the north side of Bridge Road
- This tract controls two critical flow-ways under Bridge Rd. to the Loxahatchee

This map from FEMA (Federal Emergency Management Agency) shows wetlands (in green) in the Loxa-Lucie Headwaters and two key flow-ways into the Loxahatchee River.

Loxa-Lucie Headwaters - Phase 1 Acquisition

A key parcel

- 2 mile frontage on Bridge Rd.
- 138 Acres
- For sale
- Property owner interested in sale for conservation



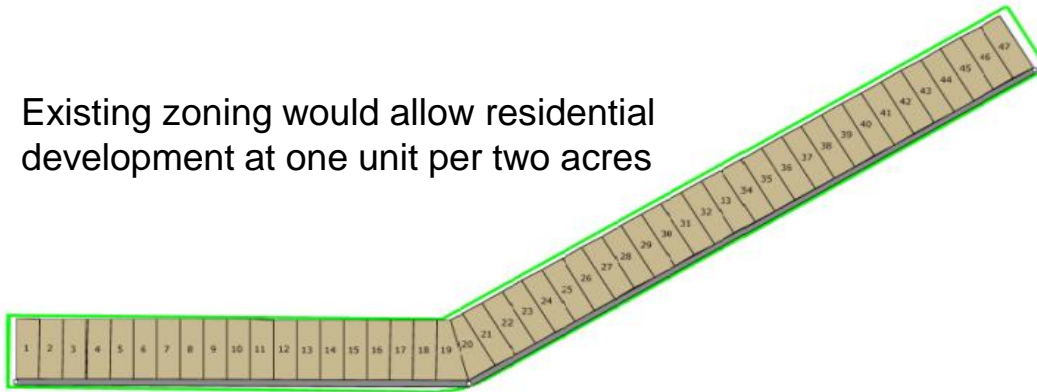
Loxa-Lucie Headwaters - Phase 1 Acquisition



Strategic Location

- Solves hydrologic issues
- Central flow-way under Bridge Rd. to Kitching Creek
- Abuts property previously proposed for conservation component of a development project
- Property is for sale
- Property offers opportunities for passive recreation

Existing zoning would allow residential development at one unit per two acres



Loxa-Lucie Headwaters - Phase 1 Acquisition



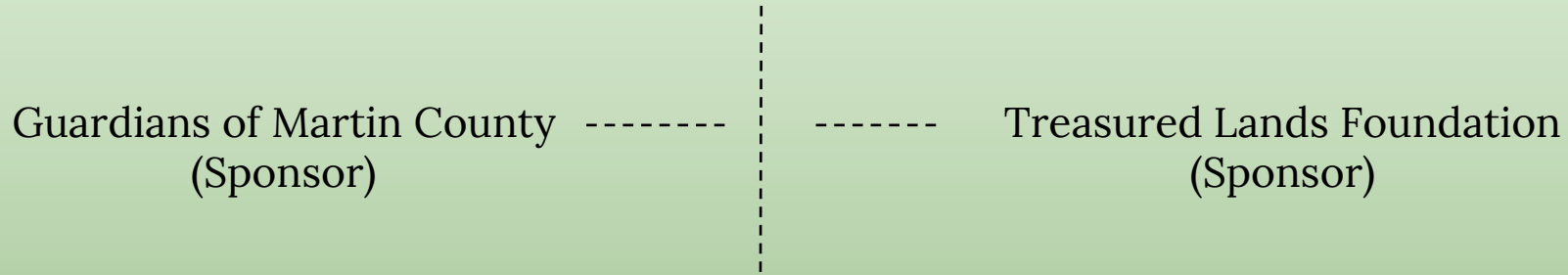
Recreational Opportunities

- Hiking Trails
- Wildlife Viewing
- Equestrian trails, with eventual connections to Jonathan Dickinson and Atlantic Ridge State Parks

Loxa-Lucie Headwaters

Organizational Chart for Acquisition

The Conservation Fund



For this initiative, The Guardians of Martin County and the Treasured Lands Foundation have engaged The Conservation Fund (a nationwide land stewardship organization) to manage the Phase 1 land acquisition program.

Completion of additional acquisitions will likely require state, federal and/or county funds, for which the Loxa-Lucie team intends to pursue modifying the boundaries of Florida Forever projects and advocating for the implementation of the natural lands hydrologic restoration called for in the Comprehensive Everglades Restoration Plan.

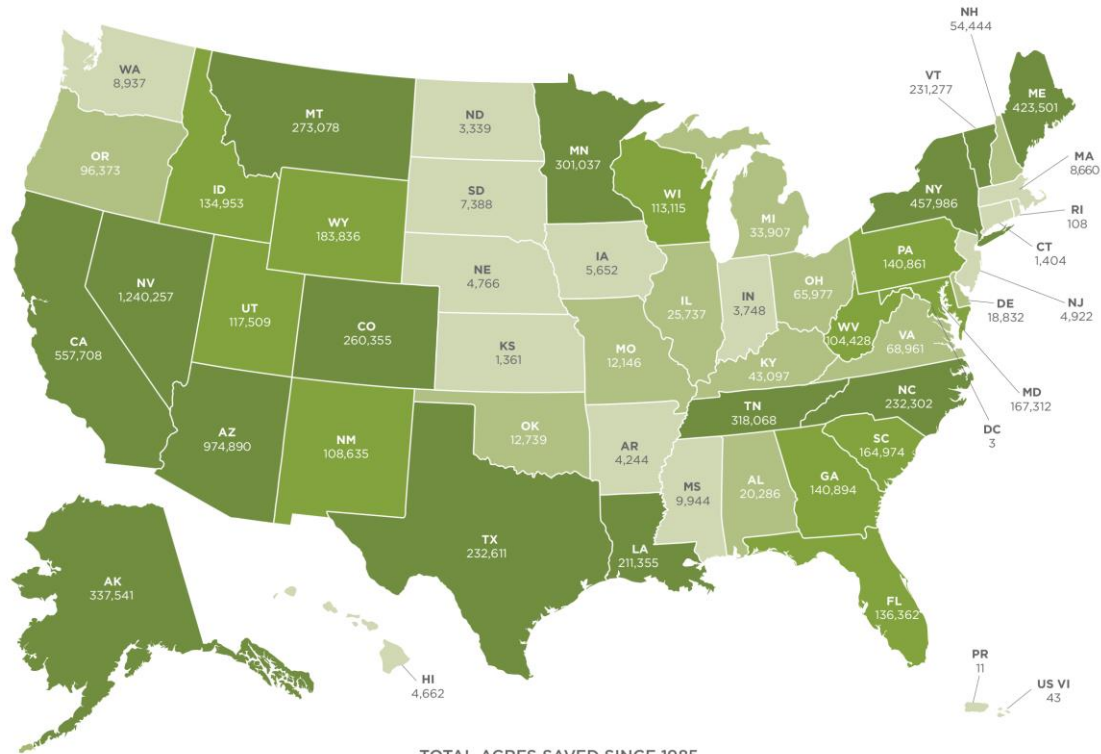
The Conservation Fund



The professional land conservation group The Conservation Fund is providing assistance with the Loxa-Lucie Headwaters Initiative. The following two slides provide information about this organization, their nationwide and state-wide experience and their role in the project.

The Conservation Fund – Where we Work

Over 8 Million Acres Protected Since 1985



TOTAL ACRES SAVED SINCE 1985

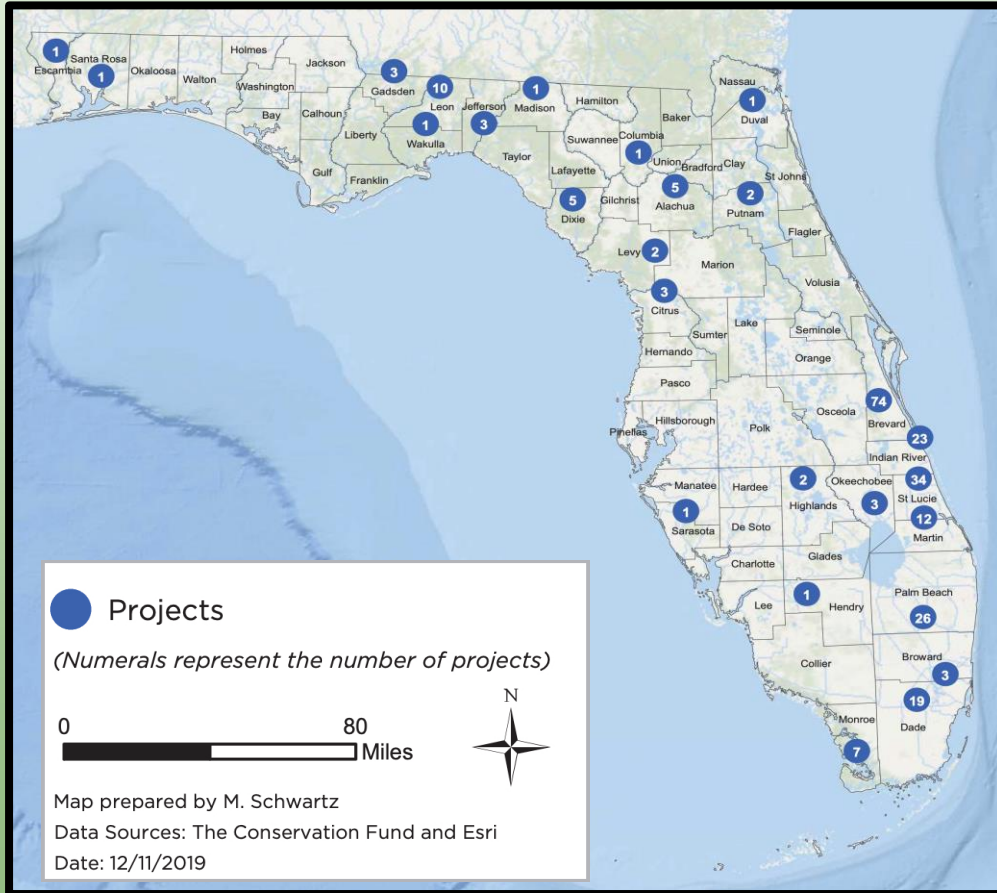
0-9,999

10,000-99,999

100,000-199,999

200,000+

The Conservation Fund - Florida Projects (1985-2019)

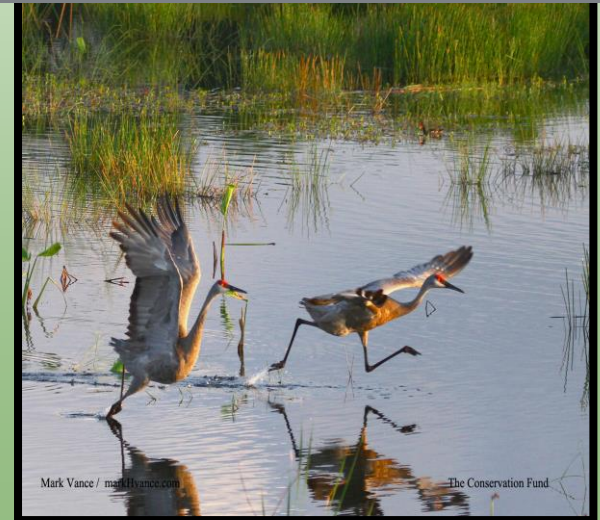


Number of Projects: 244

Acres Protected: 136,433

Fair Market Value: \$665,901,391

Acquisition Cost: \$529,975,978



Loxa-Lucie Headwaters

Projected Time Line

Schedule

- ✓ Nov 2019 Approved by Guardians Board of Directors
- ✓ Nov 2019 Approved by Treasured Lands Foundation Board of Directors
- ✓ Dec 2019 Launch Campaign
- April 2020 Initiate fund raising for Phase 1 acquisition (\$250,000)
- Spring-Summer 2020 Amend Florida Forever lists to include desired parcels
- April-Dec 2021 Complete fund raising for Phase 1 acquisition costs (~ \$2-2.5M)

Loxa-Lucie Headwaters

The Conservation Fund is serving as the fundraising vehicle for the Loxa-Lucie Initiative. At this time of uncertainty, we realize that we all have other things on our minds, and we wish you and your families all the best. Please be safe and healthy. We will resume our face-to-face educational and fundraising efforts for this project once this crisis has passed. In the meantime, if you would like to learn more about this initiative, please email Matt Sexton, Greg Braun, or Chuck Barrowclough to discuss by email or by telephone.

msexton@conservationfund.org

Donations and applicable tax deductibility

dgregbraun@aol.com

Ecological issues

cbarrowclough@treasuredlands.org

Property management, recreation,
hydrologic reconnection opportunities

Loxa-Lucie Headwaters

Pledging A Gift To The Conservation Fund

"[I / We] hereby pledge the total sum of \$ _____ as a charitable contribution to The Conservation Fund, to be a restricted gift toward the Loxa-Lucie project. This pledge is payable _____ (date) in _____ Installment(s).

Signature _____

Making A Gift To The Conservation Fund

On behalf of The Conservation Fund, thank you for your support of the Loxa-Lucie project. Your restricted gift will directly support the project acquisition costs associated with the purchase of the Loxa-Lucie project in Hobe Sound, FL.

Acknowledgements & Recognition

We formally acknowledge all contributions to The Conservation Fund by letter. Unless directed by the donor to remain anonymous, all gifts of \$1,000 and more are recognized in The Conservation Fund's annual report. Thank you for your thoughtful commitment.

Contact Name and E-mail Address _____

Address: City, State, Zip _____

Donation via Check

Checks should be made payable to **The Conservation Fund**. Please designate your gift by including Worldwide Fabrics/Bridge Rd, FL #26995 on the reference line and mail to The Conservation Fund's headquarters: 1655 N. Fort Myer Drive, Suite 1300, Arlington, VA 22209

Donation via online

www.conservationfund.org/donate

Donation via Wire

WIRE TO: SunTrust Bank; 7818 Parham Road, Richmond, VA 23294. CREDIT TO: The Conservation Fund; ACCOUNT NO: 202132617; ABA NO: 061000104. WIRE ADVICE TO: Please reference The Conservation Fund's Worldwide Fabrics/Bridge Road, FL project **#26995**. BANK CONTACT: Deniece Garrett (202) 879-6281

Loxa-Lucie Headwaters

